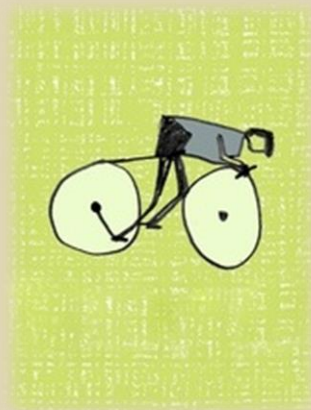




welcomes you to

# Sign up to play

an international youth exchange with deaf and hearing people



Ommen, The Netherlands  
10-23 July 2013



Education and Culture DG

'Youth in Action' Programme

The program is financially supported by Youth in Action

## Dear Participant,

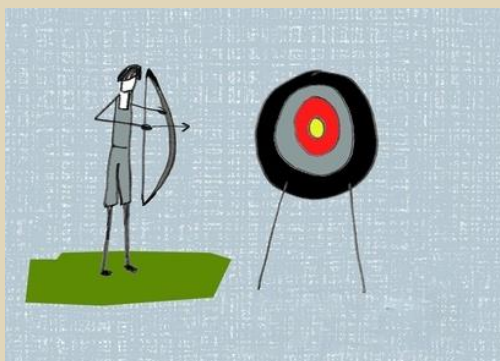
We hereby confirm your selection for the *Sign up to play* youth exchange organised and performed by Olde Vechte Foundation, Ommen, The Netherlands, between the 10<sup>th</sup> until 23<sup>rd</sup> of July 2013 (excluding traveling days).

## Dates

*Sign up to play* is taking place in between 10<sup>th</sup> till 23<sup>th</sup> of July 2013.

More specific:

<b>Arrival day:</b>	10th July 2013 until 20:00
<b>Start of the program:</b>	10th July 2013 at 21:00
<b>End of program:</b>	23rd July 2013 at 23:00
<b>Departure day:</b>	24th July 2012 before 12:00



## Important:

- Following the regulation of Youth in Action, participants will be reimbursed only in case they participate throughout the entire program.
- After reading carefully this confirmation letter and you can book your tickets. Consult your sending organization before booking your ticket, to support you
- On arranging your travel please inform Olde Vechte foundation regarding your arrival and departure from Olde Vechte. (info.oldevechte@gmail.com)
- Let us, Olde Vechte, know if you plan to arrive earlier or leave later, so we can support you with accommodation and other information.

## And:

- If you want to visit Amsterdam or nearby cities arrange your travel 1-2 before or after the exchange.

## Canceling

If you cannot come to the training contact us immediately. This exchange has limited places and it can be that there are people on the waiting list.

## Practical

### Health Insurance:

It is up to participants to take care that they have health insurance for the dates of the exchange. Take care that you have European Card Insurance (you can consult about how to get it with the contact person of your country) or that you make travel and health insurance for the dates of the project.

## What to bring?

- Passport or another eligible ID
- Health insurance documents
- Comfortable and warm clothes for indoor and outdoor activities
- Towels
- Bed sheets or sleeping bag (we can provide you with blankets and/or pillows)
- Rain jacket/clothes
- Swimming costume
- Good walking shoes
- Invoices and boarding passes

## Keep in mind also that

- During the stay we will ask participants to support us in light household duties.
- There is wireless Internet connection available in the accommodation, as well as washing machine and a drier.
- During the exchange you will be able to taste tasty meals made by our cooks!

## Special Needs

Let us know if you have any special needs so we can support you as much as possible.

## Connect!

Join the facebook group of *Sign up to play:*

<https://www.facebook.com/groups/SignUpToPlay/>

# Costs

## Travel Reimbursement:

This event is financially supported by a grant from the European Union program **Youth in Action** and **Olde Vechte Foundation**.

- We can reimburse 70% of your travel costs, if you provide us your **original travel tickets, boarding passes** and **receipts**. So remember to keep them!
- We will **only reimburse** you if you participate during the whole duration of the exchange.
- There is a **maximum** refund of travel costs per country, which you can see in the table below. This amount includes **all means** of transport and both ways.
- Participants have to take care of their own health insurance. This is **not covered** by Youth in Action or included in the travel reimbursement.

Country	Maximum travel costs 100%	Maximum refund 70%
The Netherlands	€50	€35
Latvia	€300	€210
Lithuania	€300	€210
Hungary	€300	€210
Poland	€300	€210
Greece	€400	€280
Czech Republic	€300	€210

## Participation fee

For the organization to be able to manage the project and maintain its activities, we ask for a small participation fee, which you will find in a table below. Participation fee is to be paid upon arrival.

Country	Fee per person
The Netherlands	€70
Latvia	€50
Lithuania	€50
Hungary	€50
Poland	€50
Greece	€50
Czech Republic	€50



## Where should I come?

### Address:

Zeesserweg 12, 7731 BG Ommen, The Netherlands

Phone number: 0031 529 451 963

Web page: [www.oldevechte.nl](http://www.oldevechte.nl)

Email address: [info.oldevechte@gmail.com](mailto:info.oldevechte@gmail.com)

Facebook Page: <https://www.facebook.com/SynergyOldeVechteFoundation>

### How to get there

1. Go by train to Zwolle (Direct trains from Schiphol, Utrecht & Nijmegen);
2. From Zwolle take the train with direction to Emmen and get out at station **Ommen** (approximately 15 minutes);
3. From train station Ommen to the Olde Vechte it's approximately 15 minutes walk. From the station you go right towards, and following, the Stationsweg;
4. On the crossing next you turn left and just follow the Stationsweg until the bridge;
5. Just before the bridge you turn right to the Zeesserweg;
6. Follow this road and in the turn of the road there is the entrance to the estate of the Olde Vechte on the left.



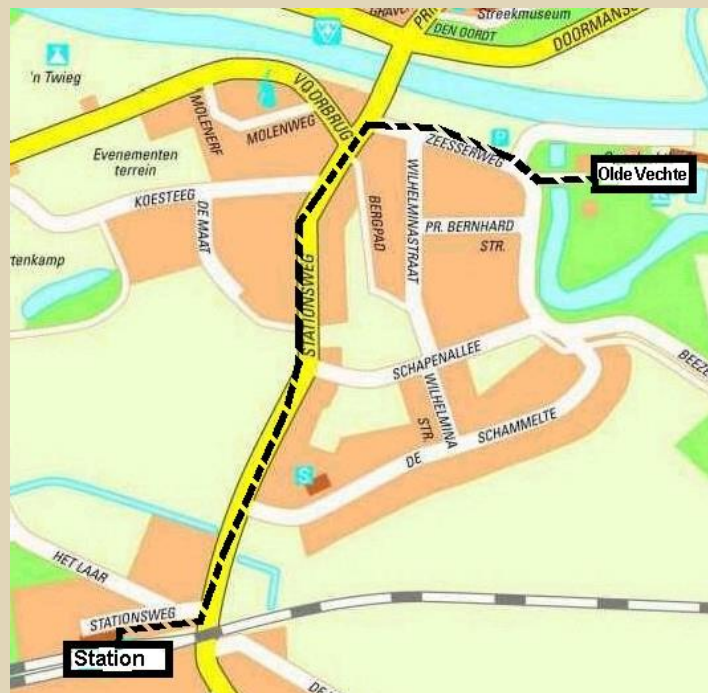
## More ways to Ommen

There are more alternative (maybe cheaper) ways to go to The Netherlands (Ommen). You can also look for other Airports in the Netherlands (Eindhoven, Maastricht/Aachen, and Rotterdam), airports in Germany (Frankfurt, Dortmund, Cologne/Bonn and Düsseldorf/ Weeze) and Belgium (Brussel)

For more information and a train planner you can check the website of the Dutch national train system: [www.ns.nl](http://www.ns.nl) (it also has an English version)

For those who are traveling in Germany please check [www.bahn.de](http://www.bahn.de) and for those who are traveling in Belgium, please check [www.b-rail.be](http://www.b-rail.be)

## Map of Ommen and how to go:



Google Maps Link: <http://goo.gl/maps/gxx8y>

Have a nice trip!